



Erasmus+



EUROPEAN PROGRAMME ERASMUS+

“LIVING BESIDE THE WATER”

***Workshop: Study of the water factor
near the hometowns of the partners
in terms of environment and ecology***

6th meeting in Santander, SPAIN

May 2022



Co-funded by the
Erasmus+ Programme
of the European Union



*The European Commission's support
for the production of this publication
does not constitute an endorsement of the contents,
which reflect the views only of the authors,
and the Commission cannot be held responsible
for any use which may be made
of the information contained therein.*

***Study of the water factor
near the hometowns of the partners in
terms of environment and ecology***

The *Workshop “Study of the water factor near the hometowns of the partners in terms of environment and ecology”* was one of the activities of the 6th meeting in Santander, SPAIN in May 2022.

The e-books that were presented are the following:

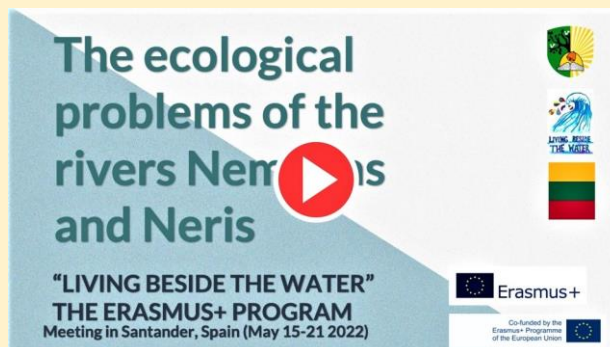


***Gymnasio Peramatos
Ioannina - GREECE***





***Kauno Roku gimnazija Kaunas -
LITHUANIA***



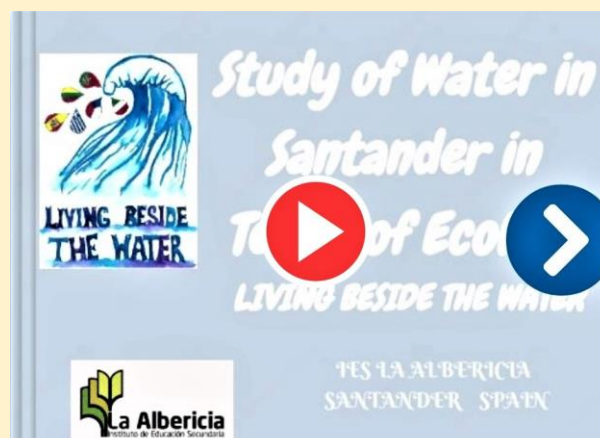


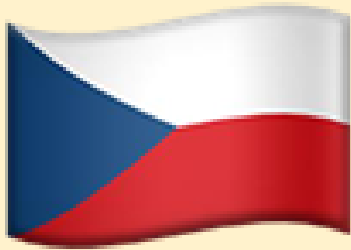
***Escola Secundaria Manuel Cargaleiro
Amora - PORTUGAL***





***I.E.S. La Albericia
Santander - SPAIN***





Primary School of D. M. Tyrš
Ceska Lipa - CZECH REPUBLIC

NATURE AND LANDSCAPES PROTECTION IN THE CZECH REPUBLIC

The European Commission's support for the production of this publication does not constitute an endorsement of the contents, which reflect the views only of the authors, and the Commission cannot be held responsible for any use which may be made of the information contained therein.



Erasmus+



Co-funded by the
Erasmus+ Programme
of the European Union

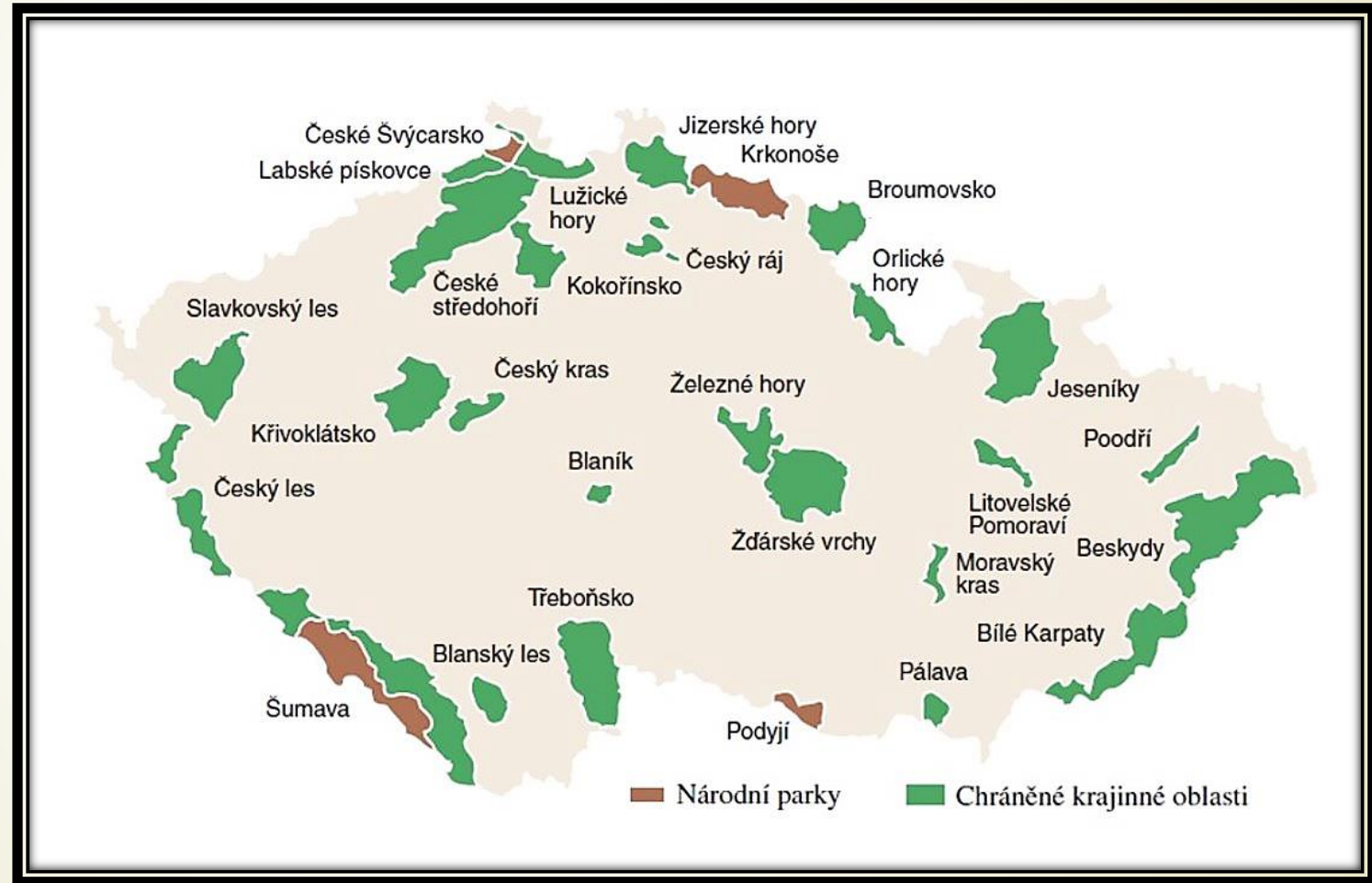




CATEGORIES OF SPECIALLY PROTECTED AREAS

- ▶ National Parks,
 - ▶ Protected Landscape Areas,
 - ▶ National Nature Reserve,
 - ▶ Nature Reserve,
 - ▶ National Natural Monuments,
 - ▶ Natural Monuments.
- 

MAP OF PROTECTED AREAS





PROTECTION

- General plant and animal protection applies to all species to protect them against destruction, damage and other activities that could endanger these species.
- A specific part is the protection of wild birds.
- Tree species are independently protected from damage and destruction.
- In the Czech Republic there is a list of endangered species.
- For example the European ground squirrel, the field hamster, the Alpine longhorn beetle, the spring snowflake, the crayfish, the pinctada – pearl oyster etc.

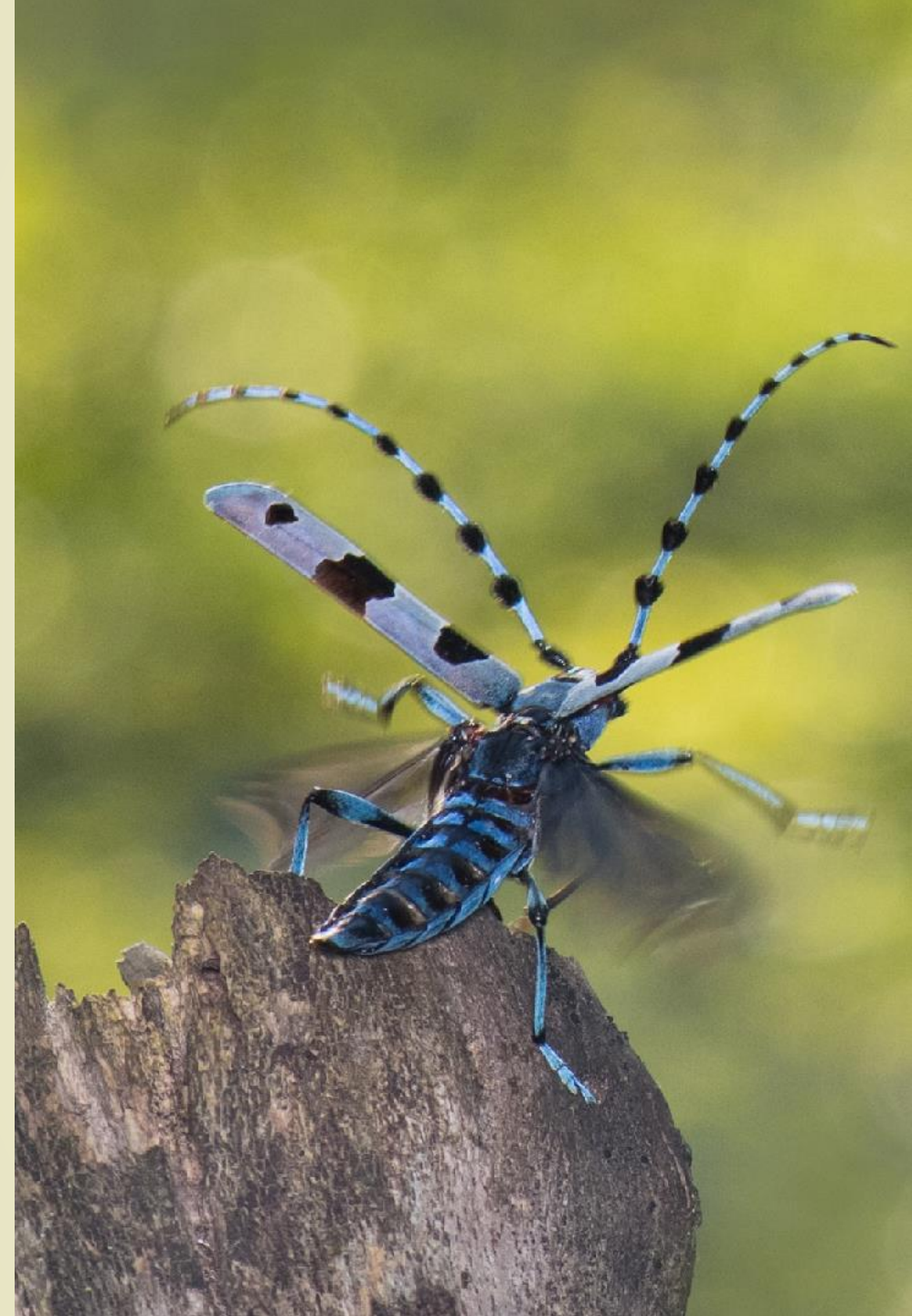


TESAŘÍK ALPSKÝ
Alpine longhorn beetle

EXPANSION

- ▶ It is a characteristic insect of the original beech forests higher than 600 - 1000 m.
- ▶ It is located in Central and Southern Europe.
- ▶ It lives around 20 km from Česká Lípa, for example in Bezděz.
- ▶ The largest site is in Český Ráj (Bohemian Paradise).





BODY DESCRIPTION

It's body reaches a size of 15 - 38 mm.

It's body colors are grey and blue.

Males feelers are almost twice as long as it's body.

They often have other colors.

LIFE

- It flies from June to August on warm, sunny days around the trees from which it was born.
- It eats the sap of injured trees.
- The pregnant female lays eggs in freshly, cut down trees.
- The biggest enemies are woodpeckers.



BLEDULE JARNÍ
Spring snowflake



Peklo/Hell

- This place is the national botanic treasure.
- It is one of the biggest places where spring snowflakes grow naturally in the Czech Republic. We saw them on our visit in March there.
- Spring snowflakes aren't the only endangered species.
- Peklo is also home of some endangered animals – for example the eagle owl, the kingfisher etc.



Description

- Mostly it has one calix, rarely two.
- It has six petals, shaped like a bell, white colored with yellow dot on the top.
- It blooms early from February to April.
- They contain violently poisonous substances that can cause excessive slobber, diarrhea, vomiting and general weakness.
- It is primarily a European species.
- In the Czech Republic, it is naturally found in wet forests and wet meadows from the lowlands to the mountains.
- Unlike her similar snowdrop, spring snowflake is native to us.



ČÁP BÍLÝ
White stork



Appearance

- It is one of the largest birds living in our country.
- It has a white plumage. Squadrons and large croups are black.
- It has a large beak and it's long legs are red.



Food

- ▶ It feeds on frogs, ground squirrels, voles, etc.
- ▶ It is of great importance for the agriculture.
- ▶ It hunts for food in damp meadows and pond banks.





Way of life

- ▶ Between summer and autumn our storks fly away to the south.
- ▶ Storks from Eastern Europe fly across the Iberian Peninsula to Africa.
- ▶ In the east they fly through the Balkan Peninsula and also as far as Africa.
- ▶ They are able to travel up to 300 km per day.

Occurrence in the Czech Republic and way of life

- ▶ We can find storks in the Třeboň region, Písek and South Moravia.
- ▶ Also in Zahrádky and Jestřebí but there is a low chance you will actually see them.
- ▶ On a medium-high chimneys they build a nest, strong enough to last the year.
- ▶ In early spring they return back to their nests.



PRVOSENKA VYŠŠÍ
Primrose higher



Basic informations

- ▶ Together with snowdrops, primroses belong to the typical spring flowers in the Czech Republic.
- ▶ One of the species of primroses in the Czech Republic is primrose higher.
- ▶ This perennial plant growing to a height of up to 30 cm usually blooms from March to April or May and in the highest positions until June.
- ▶ Primrose higher can be changed with ours spring primrose, which blooms earlier and it's lower.



Utilization

- ▶ Primrose is widely used in folk medicine.
- ▶ The upper parts are made decoctions.
- ▶ The decoctions soothe it, have anti-inflammatory effects, the underground parts of the plant are protected in the Czech Republic.



LEDŇÁČEK ŘÍČNÍ
Kingfisher



Descriptions

- ▶ It has a large head ,a long beak, a very short tail and even shorter legs.
- ▶ Legs are really only for sitting.



General informations

- ▶ They can be found in deep forests near calm ponds and small rivers.
- ▶ Predators of kingfishers include foxes, snakes, and raccoons.





Mythology

- ▶ The kingfisher appears in many mythologies, legends and fairy tales around the world.
- ▶ It appears, for example, in Greek, Egyptian, Native Americans, Japanese, Christian, Celtic and also in our Czech legends and mythology.
- ▶ Most idyllic nostalgia is the idiom of "Halcyon Days," the kingfisher is an overwhelmingly positive symbol. In almost every tradition this bird indicates beauty, virtue, and good things to come.

Dictionary – slovník

WORDS FROM PRESENTATION
WITH CZECH TRANSLATE



KINGFISHER - LEDŇÁČEK

POND - RYBNÍK

RIVER - ŘEKA

WING - KŘÍDLO

BEAK - ZOBÁK

FAIRYTALE - POHÁDKA

IDIOM - PŘÍSLOVÍ

BIRD - PTÁK

BEAUTY - KRÁSA

SLOVA Z PREZENTACE
S ČESKÝM PŘEKLADEM



VLÁSKATEC TAJEMNÝ
Mysterious hairpiece



Occurrence

- It occurs in moist, heavily shaded, mostly rocky habitats, at low altitudes in the Czech Republic.



- **It is a critically endangered.**
- On the local sandstones grows a fern included in the list of critically endangered species.
- In Central Europe it grows only in the form of a tiny fibrous gametophyte resembling fine moss.
- We can find it in Peklo near Česká Lípa.





Istituto Comprensivo “Micheli Bolognesi”

Livorno - ITALY



**LIVING BESIDE
THE WATER**



Erasmus+

Co-funded by the
Erasmus+ Programme
of the European Union



Water and environment

In Livorno

"The European Commission support for the production of this publication does not constitute an endorsement of the contents which reflects the views only of the authors, and the Commission cannot be held responsible for any use which may be made of the information contained therein."



A watercolor illustration of an underwater scene. On the left, three clownfish of various sizes swim near green seaweed. In the center, a large blue circle contains the number '01'. Below this, the text 'NATURAL RESERVES' is written in a bold, dark blue font, followed by a horizontal line and the subtitle 'Protected areas in Livorno'. On the right, a pink jellyfish floats above yellow and orange coral, with a small clownfish nearby. The background is white with scattered blue watercolor washes.

01

NATURAL RESERVES

Protected areas in Livorno

OASI DELLA CONTESSA



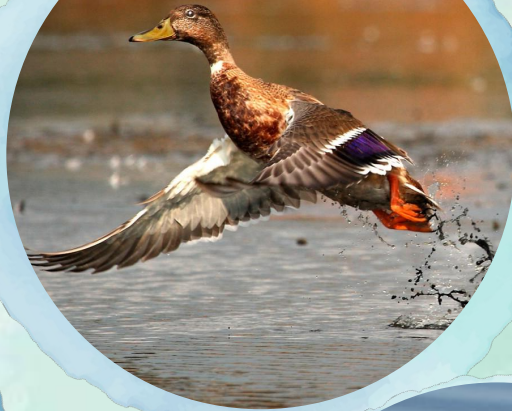
-The 'Oasi della Contessa' Nature Reserve is a surviving strip of the ancient system of coastal wetland that once typified the Pisa-Livorno plain.

It consists of roughly 22 hectares of land that still cherish paludal and alluvial sediments going back as far as the post-ice age era.



OASI DELLA CONTESSA

-The Oasi della Contessa is a privileged stop along the flyways of many waterbirds but it is also home to sedentary species and birds that nest in the surroundings of the reserve.



'SECICHE DELLA MELORIA'



The National protected marine area

-The Shoals of Meloria represent an area of shallow rocky bottoms in which the part of the shoal has an extension of 35-40 square km, with a shape that resembles that of a triangle. The marine protected area consists of a low coast with sandy coasts, characterized by strong forms of urbanization and anthropization.





MARINE ENVIRONMENT

‘Secche della Meloria’



FAUNA

The natural area holds numerous species of colorful and particular fish



FLORA

The protected area has a great variety of algae, some very particular

CALAFURIA NATURE RESERVE



-The Calafuria Nature Reserve is a protected area on the coastal area of Livorno.

Particularly suggestive and interesting from the naturalistic point of view; the most beautiful part is that of the hills in the hinterland, completely uninhabited and covered with woods. Inside there is the classic vegetation of the Mediterranean scrub.





02

SEA TURTLES

Species name: 'caretta caretta'



SEA TURTLES

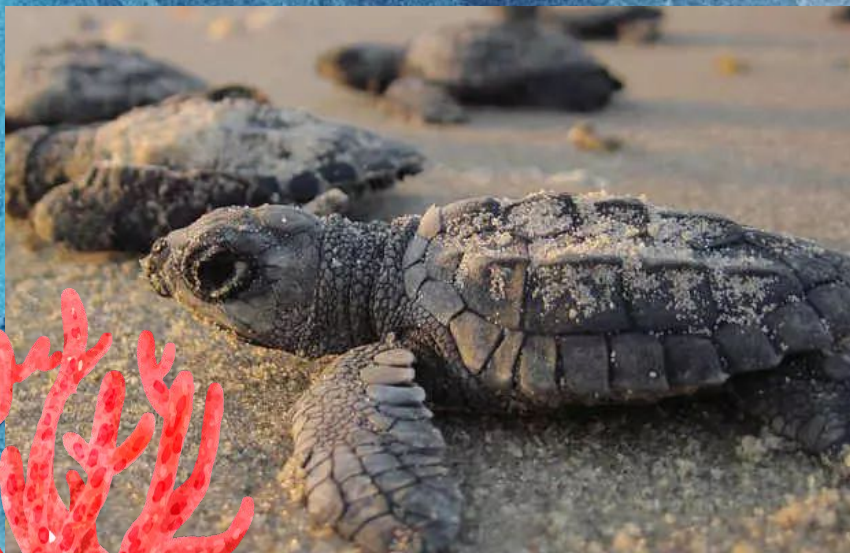


On the beach of San Vincenzo, the nest of sea turtles opens up.



-On the night between Wednesday 8 and Thursday 9 of September 2021, 64 baby turtles were born on the beach of Rimigliano, in the Municipality of San Vincenzo. The nest was 'adopted' by Rimigliano last July, to safeguard it.

SEA TURTLES



INFORMATION

01

-The Tuscan association of volunteers takes care of the protection of sea turtles, in collaboration with the WWF.

02

BABY TURTLES

-Around 2 am the first group of baby turtles emerged, very numerous, followed then, within an hour, by another group of about twenty babies.



THANKS

For your attention

- Baldi Violetta
- De Michele Mario
- Gjakova Melissa
- Uliana Mezentseva
- Romano Marika